

D.A.F.

LF 55.220 4X2 RHD Whale vacuum tank 8.1 m3

GENERAL

ID number	D365331
Brand	D.A.F.
Type	LF 55.220 4X2 RHD Whale vacuum tank 8.1 m3
Chassis number	XLRAE55GF0L365331
1st Registration Date	01-01-2011
Mileage (Km)	157150
Country of registration	UK
Dimensions	760x250x370 cm

POWERTRAIN

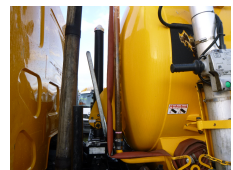
Engine power (hp)	220
Gearbox type	Manual
Number of gears	6
Euro standard	5
Differential lock	✓
ABS	✓

CHASSIS

Gross weight	18000 kg
Wheelbase	425 cm
Fuel Capacity	175 l

TYRES

Tyre size axle 1	315/80R22,5
Tyre size axle 2	315/80R22,5



ADDITIONAL INFO

Whale steel tipping vacuum tank, Capacity 8185 litres, 2 Compartments , Whale vacuum pump / exhauster, Whale jetting pump, Wall thickness 5.0 mm, Max. working pressure 1.0 bar, test pressure 1,5 bar // Truck Euro 5, RIGHT-HAND DRIVE, 4x2, Manual gearbox (6 gears), Steel suspension, Tyres 315/80R22.5, Day cabin, Digital tacho, Shipment dimensions 760x250x370 cm

AXLES

Number of axles	2
Number of driven axles	1
Configuration	4x2
Suspension axle 1	Steel suspension
Suspension axle 2	Steel suspension
Steering axle Axle 1	✓

SUPERSTRUCTURE

Make superstructure	Whale
---------------------	-------

CABIN

Cabin Type	Day cabin
Right hand drive	✓

TANK

Volume (Liters)	8185
Number of compartments	2
Tank material	Staal
Pump	✓
Pump -brand and type	Whale
Hoses	✓
Test pressure	1.5 bar
Maximum work pressure	-1.0 bar vacuum
Wall thickness	5 mm
Cleaning / vacuum	✓