

Spitzer

Powder tank alu 43 m3 / 1 comp


GENERAL

ID number	0041015
Brand	Spitzer
Type	Powder tank alu 43 m3 / 1 comp
Chassis number	041015
1st Registration Date	01-01-2010
Country of registration	UK
Dimensions	1160x250x395

POWERTRAIN

ABS 


CHASSIS

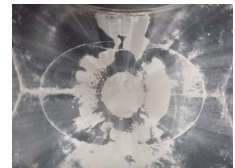
Empty weight	5600
Gross weight	37000
Kingpin height	120 CM
Aluminium rims	

TYRES

Tyre size axle 1	385/65R22.5
Tyre size axle 2	385/65R22.5
Tyre size axle 3	385/65R22.5

AXLES

Number of axles	3
Brand axles	Ror
Disc brake	
Suspension axle 1	Air suspension
Suspension axle 2	Air suspension
Suspension axle 3	Air suspension



TANK

Volume (Liters)	43000
Number of compartments	1
Volume compartments (Liters)	43000
Tank material	Aluminium
Powder	✓

ADDITIONAL INFO

Aluminium powder tank / cement silo, Capacity 43000 litres, 1 Compartment, ABS, Air suspension, ROR axles, Disc brakes, Alloy wheels, Shipment dimensions 1160x250x395 cm.