

Spitzer

Powder tank alu 37 m3 / 1 comp

GENERAL

ID number	E0041265
Brand	Spitzer
Type	Powder tank alu 37 m3 / 1 comp
Chassis number	VF9SFS27MDX041265
1st Registration Date	01-01-2013
Country of registration	UK
Dimensions	1020x250x370 cm

POWERTRAIN

ABS	✓
-----	---

CHASSIS

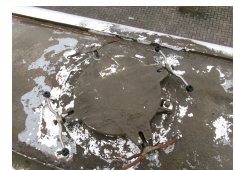
Empty weight	4900 kg
Gross weight	39000 kg
Chassis height	100 cm
Kingpin height	120 cm
Aluminium rims	✓

TYRES

Tyre size axle 1	385/65R22.5
Tyre size axle 2	385/65R22.5
Tyre size axle 3	385/65R22.5

AXLES

Number of axles	3
Brand axles	Mercedes
Disc brake	✓
Suspension axle 1	Air suspension
Suspension axle 2	Air suspension
Suspension axle 3	Air suspension



ADDITIONAL INFO

Aluminium powder tank / cement silo,
Capacity 37000 litres, 1 Compartment,
Test pressure 3.0 bar, Max. working
pressure 2.0 bar, ABS, Air suspension,
Mercedes axles, Disc brakes, Alloy wheels,
Shipment dimensions 1020x250x370 cm

TANK

Volume (Liters)	37000
Number of compartments	1
Volume compartments (Liters)	37000
Tank material	Aluminium
Test pressure	3 bar
Maximum work pressure	2 bar
Powder	