

Lakeland Tankers

Fuel tank alu 42.8 m³ / 6 comp + pump

GENERAL

ID number	0249023
Brand	Lakeland Tankers
Type	Fuel tank alu 42.8 m ³ / 6 comp + pump
Chassis number	SA91489TPDL249023
1st Registration Date	01-01-2013
Country of registration	UK
Dimensions	1274x255x340cm

POWERTRAIN

ABS	✓
-----	---

CHASSIS

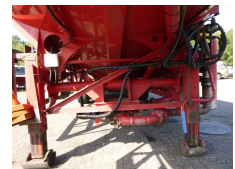
Empty weight	5800 kg
Gross weight	38000 kg
Chassis height	100 cm
Fifth wheel height	120 cm
Aluminium rims	✓

TYRES

Tyre size axle 1	385/65R22.5
Tyre size axle 2	385/65R22.5
Tyre size axle 3	385/65R22.5

AXLES

Number of axles	3
Brand axles	Bpweco
Drum brake	✓
Suspension axle 1	Air suspension
Suspension axle 2	Air suspension
Suspension axle 3	Air suspension



ADDITIONAL INFO

Lakeland aluminium fuel tank, Capacity 42800 liters, 6 compartments (7600,7600,7000,7600,6000,7000 liters), Emco-Wheaton hydraulic pump, Hoses, Optical overload sensor, Vapour recovery, Max working pressure 0.12 bar, Test pressure 0.41 bar, Year of manufacture 2015, Shipment dimensions: 1274x255x340 cm.

SUPERSTRUCTURE

Make superstructure	Lakeland Tankers
---------------------	------------------

ADR

ADR	✓
ADR tankcode	LGBF
ADR Classes	FL // AT

TANK

Volume (Liters)	42800 L
Number of compartments	6
Volume compartments (Liters)	7600,7600,7000,7600,6000,7000
Tank material	Aluminium
Pump	✓
Pump -brand and type	Emco-Wheaton
Hoses	✓
Vapour recovery	✓
Optical overload sensor	✓
Test pressure	0.41 bar
Maximum work pressure	0.12 bar
Fuel	✓